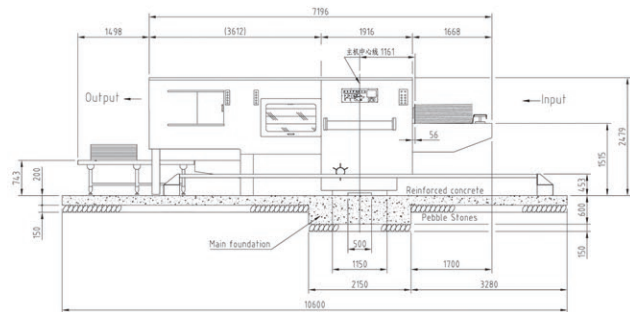
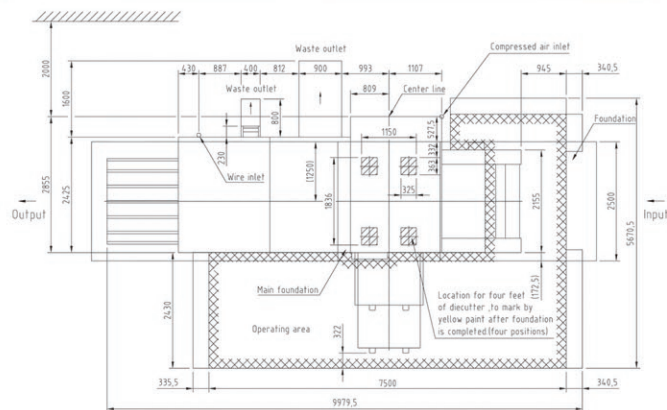


PE1620SA-Extra FLOOR PLAN



PE1620SA-Extra FLOOR PLAN



PE1620SA-Extra

Specifications:

Max. Sheet Size:	1620 x 1200 mm
Min. Sheet Size:	650 x 450 mm
Max. Cutting Size:	1600 x 1180 mm
Max. Mechanical Speed:	5000 cycles/hour
Max. Cutting Pressure:	400 tons
Stock Range:	E, B,C,A and AB flute corrugated board (1~8.5mm)
Min. Gripper Margin:	6~12 mm
Min. Gripper Waste:	12 mm
Cutting Rule Height :	23.8 mm
Total Power Required:	35 KW
Mobile Lower Platen Adjusting Range :	± 1.5mm
Net Weight of Machine:	32 tons
Gross Weight of Machine:	39.5 tons
Machine Dimensions:	9980(L)x5670(W)x2480(H)mm (incl. Catwalk)

In the interest of product improvement, the manufacturer reserves the right to change specifications and features without notice.



ETERNA
A MEMBER OF BOBST GROUP
Shanghai Eterna Machinery Co., Ltd.

Shanghai Plant:
No. 1125 Taishun Road, Anting Town,
Jiading District, Shanghai, China
Tel: 86-21-59502451 59502481-2487
Fax: 86-21-59502477
E-mail: eterna.sales@gmail.com

Shanghai Office:
T1114B, Gateway Plaza,
No.2501 Xietu Road, Shanghai 200030 China
Tel: 86-21-64262538
Fax: 86-21-64262153
E-mail: shen@eterna-shanghai.com

Agent

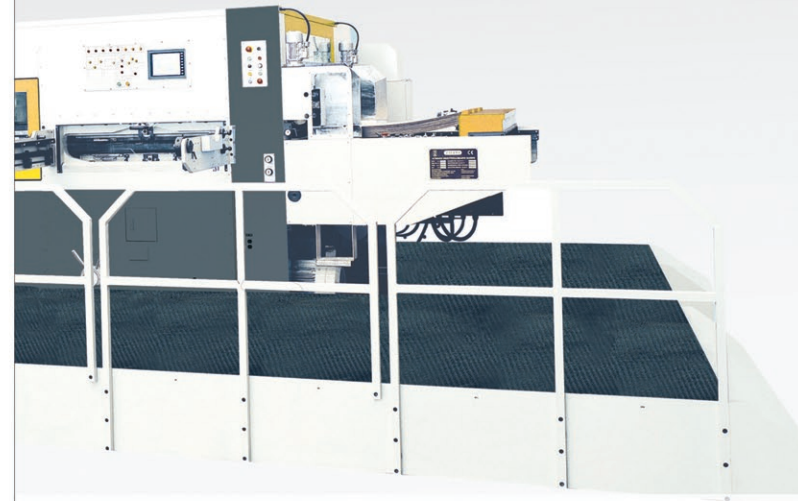
North American Office:
1-1500 Valmont Way, Richmond, B6V 1Y4,
Richmond, B.C. Canada
Tel: +16042762027
Fax: +16042781005

ETERNA
A MEMBER OF BOBST GROUP



**AUTOMATIC FLATBED DIECUTTING AND CREASING
MACHINE WITH STRIPPING STATION (ACCUFEED)**

PE1620SA-Extra



SHANGHAI ETERNAL MACHINERY CO.,LTD.

PE1620SA-Extra

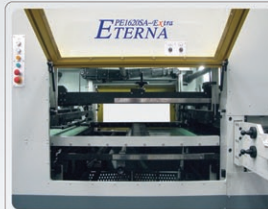
AUTOMATIC FLATBED DIECUTTING AND CREASING MACHINE
WITH STRIPPING STATION (ACCUFEEED)

ETERNA
A MEMBER OF BOBST GROUP



DELIVERY SECTION

- Front, back and side joggers to ensure neat stacking.
- Non-stop delivery ensures continuous productivity.
- Batch counter output.



STRIPPING SECTION

- Heavy duty double action stripping system to ensure positive stripping.
- Centerline system compatible to Centerline II for quick stripping die set up.
- Motorized upper frame suspending hoister.
- Quick lock stripping pins used for quick set up of simple stripping work.



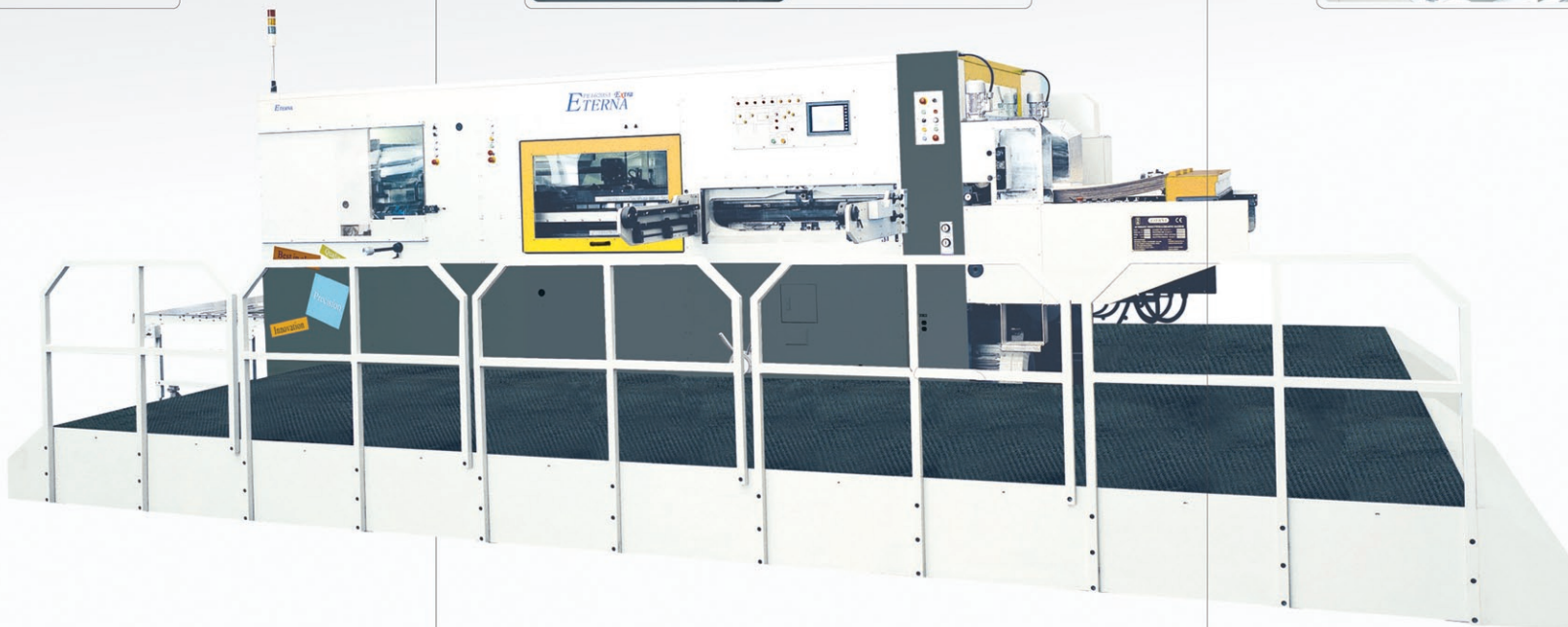
ETERNA LEAD EDGE FEEDER

- Allows consistent and precise feeding of wide range corrugated board with various board quality.
- Unique polyurethane wheel surface with grid lifter and air cushion ensures smooth feeding of warp boards with consistency and register accuracy.
- Front gauge position back and forth adjustable to accommodate variation in gripper margin according to the job specification.
- Fine vacuum suction adjustment through inverter adapts to wide range of stock thickness from F flute to double wall.



BATCH COUNTER BELT TYPE DEVICE

- Escalator delivery fork with non-stop air cylinder and conveyor belt delivery table to prevent the sheets from scratching and for neat sheet stack deliver.



DIECUTTING SECTION

- Safety door and diechase safety locking system to ensure safe operation.
- Complete lost sheet control throughout the entire machine.
- Centerline system compatible to Centerline II for quick change over and short set up time.
- Air cushion underneath the cutting plate for easy cutting plate floating in and out.